

KMT Waterjet Cutting Pumps

STREAMLINE® SL-VI 60,000psi/15hp



THE INDUSTRY STANDARD & AN EXCEPTIONAL VALUE!

The KMT STREAMLINE® SL-VI Series utilizes the latest technology & is designed for ease of use, reliability & convenience---the result is a system that delivers the highest efficiency & profit.



Key Pump Features

Easiest to Maintain Simpler, more basic controls than the large SL-VI systems

Economical Size & Cost Compact machine with minimal water consumption

Patented Technology Intensifier Hard Seal End Cap (HSEC) Design Eliminates Extra Seal

“Quick Release” Plunger Exclusive plunger removal design simplifies removal

Cartridge seal system design is the fastest change-out design and provides a redundant sealing system

Easy Access Open top for higher visibility/ease of maintenance

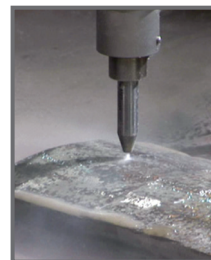
Single Topwork per Pump 60,000 psi is produced with just one topwork, delivering lower maintenance costs & quieter operation with fewer parts.

KMT STREAMLINE® SL-VI pumps are the easiest to maintain and the most advanced STREAMLINE® pumps ever offered. Depending on pressure and water quality, KMT seals last longer than any other system - allowing for continuous operation in the most demanding production schedules.

KMT STREAMLINE® SL-VI 15hp pump has the pressure & power to cut most any material: steel, glass, plastic, rubber and much more!



KMT Waterjet now offers a Cut Calculator APP that compares 90,000psi to 60,000psi cutting.
Increase Productivity @ 90,000psi!



SPECIFICATIONS

Nominal Power Rate	15hp (11kW)
Max. Continuous Pressure	60,000 psi (4,137 bar)
Max. Water Flow Rate	0.30 gpm (1.14 L/min)
Max. Single Orifice Dia. (@ full pressure)	.007 in. (0.178 mm)
Control Voltage & Power Supply	24V DC; 10 Amps DC
Ambient Operating Temperature	Min. 40°F (5° C), Max. 104°F (40° C)
Hydraulic Reservoir Capacity	12 gal (45 L)
Cooling Water Flow @ 75° (24° C) Water Temp.	2 gpm (7.6 L/min)
Attenuator Volume	.11 gal (.41L)
Length	56" (1.4 m)
Width	28" (711 mm)
Height	33" (838 mm)
Weight	1,800 lbs.



KMT Waterjet offers the best value & broadest range of waterjet pumps in the Industry.

KMT STREAMLINE® SL-VI pumps deliver the necessary power, productivity & performance based on your requirements ranging from 15hp-200hp & from 60,000psi to the STREAMLINE PRO®-III 90,000psi/125hp---World's Fastest Waterjet!



STREAMLINE® SL-VI
60,000psi/30hp, 40hp,
50hp and 100hp
*Configurable Pumps from
Basic to Fully Loaded*



STREAMLINE PRO® III
90,000psi/60hp & 125hp
World's Fastest Waterjet



THE HEART OF WATERJET CUTTING

KMT Waterjet Systems Inc.
635 West 12th Street
Baxter Springs, KS 66713 USA
620-856-2151 • 800-826-9274
Fax: 620-856-5050
sales@kmtwaterjet.com



kmtwaterjet.com

KMT Waterjet Cutting Pumps

STREAMLINE® SL-VI 60,000psi/30hp, 40hp & 50hp

THE RIGHT SOLUTION FOR EVERY APPLICATION


The KMT STREAMLINE® SL-VI Series utilizes the latest technology and an innovative configurable design for ease of use, reliability and convenience---the result is a system that delivers the highest efficiency and profit.



SL-VI s-Series
(Basic Model - Available in 30hp, 40hp & 50hp)

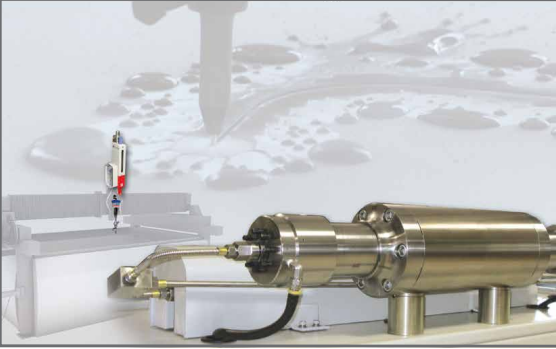
SL-VI e-Series
(Economical Model - Available in 30hp, 40hp & 50hp)

SL-VI i-Series
(Fully Loaded Model - Available in 30hp, 40hp & 50hp)



INCREASED ORIFICE SIZES = INCREASED PRODUCTIVITY at 60,000psi

	SL-V	SL-VI
ORIFICE SIZE @ 30HP	.010	.011
ORIFICE SIZE @ 40HP	.012	.013
ORIFICE SIZE @ 50HP	.013	.014



Key Pump Features and Options Include:

- Proven Technology** STREAMLINE® SL-VI uses intensifier technology that has millions of operational usage hours
- Modular Design** Variety of choices to meet OEM and customer requirements
- High Pressure Intensifiers** 60,000psi redundant topworks*
- Horsepower Selection** 30hp, 40hp & 50hp
- Top Cover Guard Interlock Design*** Meets EN ISO13849-1 Safety Performance Standard PLa rating
- Power Factor Correction*** Reduce electrical demand and operating costs
- IE3 and NEMA Premium Motor Design** Optimized motor efficiency, reduced electrical consumption
- Siemens PLC Based Electrical Panel** Universal design for global network support
- Redesigned Electrical Panel** Separation of High Voltage & Low Voltage sections meet IEC/EN 60204-1 Standards



SPECIFICATIONS

DESCRIPTION	UNIT	30	40	50
Motor Rating	kW/HP	22 / 30	29 / 40	37 / 50
Pressure Range	PSI	60,000	60,000	60,000
Max. Flow Rate at Max. Pressure (60 Hz)	gal/min	0.69	0.84	1.00
Length	in	67.7	67.7	67.7
Width	in	45.6	45.6	45.6
Height	in	59.3	59.3	59.3
Cutting Water Circuit				
Intensification Ratio		20.21	20.21	20.21
Max. Stroke Rate	SPM	*38	*49	*59
Attenuator Volume	Liter	1	1	1
Cutting Water Inlet Pressure	PSI	35-100	35-100	35-100
Min. Cutting Water Inlet Flow	gal/min	2.8	3.5	4
Low Pressure Filter	µm abs.	10	10	10
Controls & Electric				
Nom. Current at 480V/60Hz	A	40	52	65
Pneumatic, Hydraulics & Cooling Circuit*				
Hydraulic Tank Capacity	gal	40	40	40
Oil Level and Temperature Control		Sensor	Sensor	Sensor
Standard Features				
Adjustable Booster Pump		•	•	•
Cutting Water Inlet Shut-Off Valve		•	•	•
Dual Pressure Setting		•	•	•
Oil Drip Pan		•	•	•
Dump Valve		•	•	•
Water Cooled Heat Exchanger				
Options				
Additional Liter of Attenuation		o	o	o
Air Cooled Heat Exchanger		o	o	o
Cover		o	o	o
Doors		o	o	o
Electric Panel & Cabinet		o	o	o
High Pressure Transducer		o	o	o
Motor Rewind for 575v & CSA		o	o	o
Power Factor Correction		o	o	o
Proportional Control		o	o	o
Redundant Intensifier		o	o	o
Soft Start/Electronic/Y-Delta		o	o	o
USDA		o	o	o

NOTE: Applies to all pumps:

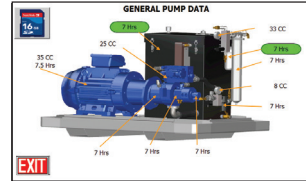
Hydraulic Tank Capacity 40 gal
 Min. pneumatic air pressure 86 PSI
 Max. pneumatic air flow rate 1 SCFM
 Ambient temp. @ Oil-to-Water cooling circuit 41 - 106 °F
 Ambient temp. @ Oil-to-Air cooling circuit 41 - 86 °F

- Standard
- o Option
- * Estimated

NEW! Siemens PLC Based Electrical Panel



The Home Screen displays the operating status of the machine and provides access to a series of setup and monitoring screens.



Harmonized PLC Platform NEW Touch screen is software updateable, offers 11 languages, optional gauges, and includes monitoring hours and cycle times for preventive maintenance. Standard systems offer Ethernet and USB Port with import/export capabilities.



KMT Waterjet now offers a Cut Calculator APP that compares 90,000psi to 60,000psi cutting. Increase Productivity @ 90,000psi!



KMT Waterjet Systems Inc.
 635 West 12th Street
 Baxter Springs, KS 66713 USA
 620-856-2151 • 800-826-9274
 Fax: 620-856-5050
 sales@kmtwaterjet.com

kmtwaterjet.com



3/27/2016 - R4
 Added 30hp Unit

KMT Waterjet Cutting Pumps

STREAMLINE® SL-VI 60,000psi/100hp

THE RIGHT SOLUTION FOR EVERY APPLICATION

The KMT STREAMLINE® SL-VI Series utilizes the latest technology and an innovative configurable design for ease of use, reliability and convenience---the result is a system that delivers the highest efficiency and profit.



SL-VI e-Series
(Economical Model)



SL-VI i Series
(Fully Loaded)



NUMBER OF CUTTING HEADS	ORIFICE SIZE	@PSI
1 (1.88 gpm max)	.019"	60,000
2 (1.88 gpm max)	.013"	60,000
1 (2.00 gpm max)	.020"	55,000
2 (2.00 gpm max)	.014"	55,000

*Values good for 60Hz & 50Hz



Key Pump Features and Options Include:

Proven Technology STREAMLINE® SL-VI uses intensifier technology that has millions of operational usage hours

Modular Design Variety of choices to meet OEM and customer requirements

High Pressure Intensifiers 60,000psi redundant topworks*

Horsepower Selection 100hp

Top Cover Guard Interlock Design* Meets EN ISO13849-1 Safety Performance Standard PLa rating

Power Factor Correction* Reduce electrical demand and operating costs

IE3 and NEMA Premium Motor Design Optimized motor efficiency, reduced electrical consumption

Siemens PLC Based Electrical Panel Universal design for global network support

Redesigned Electrical Panel Separation of High Voltage & Low Voltage sections meet IEC/EN 60204-1 Standards

*Optional

The Right Pump Matters



SPECIFICATIONS

DESCRIPTION	UNIT	100
Motor Rating	kW/HP	75/100
Pressure Range	PSI	60,000
Max. Flow Rate at Max. Pressure (60 Hz)	gal/min	1.88
Length	in	83.7
Width	in	53.7
Height	in	59.3
Cutting Water Circuit		
Intensification Ratio		22.9
Max. Stroke Rate	SPM	*75
Attenuator Volume	Liter	2
Cutting Water Inlet Pressure	PSI	35-100
Min. Cutting Water Inlet Flow	gal/min	7.0
Low Pressure Filter	µm abs.	10
Controls & Electric		
Nom. Current at 480V/60Hz	A	124
Hydraulics		
Hydraulic Tank Capacity	gal	58
Oil Level and Temperature Control		Sensor
Standard Features		
Adjustable Booster Pump		•
Cutting Water Inlet Shut-Off Valve		•
Dual Pressure Setting		•
Oil Drip Pan		•
Dump Valve		•
Water Cooled Heat Exchanger		•
Options		
Additional Liter of Attenuation		◦
Air Cooled Heat Exchanger		◦
Cover		•
Doors		•
Electric Panel & Cabinet		◦
High Pressure Transducer		◦
Motor Rewind for 575v & CSA		◦
Power Factor Correction		◦
Proportional Control		◦
Redundant Intensifier		◦
Soft Start/Electronic/Y-Delta		◦
USDA		◦

NOTE: Applies to all pumps:

Hydraulic Tank Capacity 40 gal
 Min. pneumatic air pressure 86 PSI
 Max. pneumatic air flow rate 1 SCFM
 Ambient temp. @ Oil-to-Water cooling circuit 41 - 106°F
 Ambient temp. @ Oil-to-Air cooling circuit 41 - 86°F

- Standard
- Option
- * Estimated

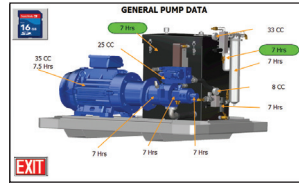


KMT Waterjet Systems Inc.
 635 West 12th Street
 Baxter Springs, KS 66713 USA
 620-856-2151 • 800-826-9274
sales@kmtwaterjet.com

NEW! Siemens PLC Based Electrical Panel



The Home Screen displays the operating status of the machine and provides access to a series of setup and monitoring screens.



Harmonized PLC Platform NEW Touch screen is software updateable, offers 11 languages, optional gauges, and includes monitoring hours and cycle times for preventive maintenance. Standard systems offer Ethernet and USB Port with import/export capabilities.



KMT Waterjet now offers a Cut Calculator APP that compares 90,000psi to 60,000psi cutting. Increase Productivity @ 90,000psi!



THE HEART OF WATERJET CUTTING

kmtwaterjet.com



5/31/2016 - R5
 UPDATED GRAPHICS